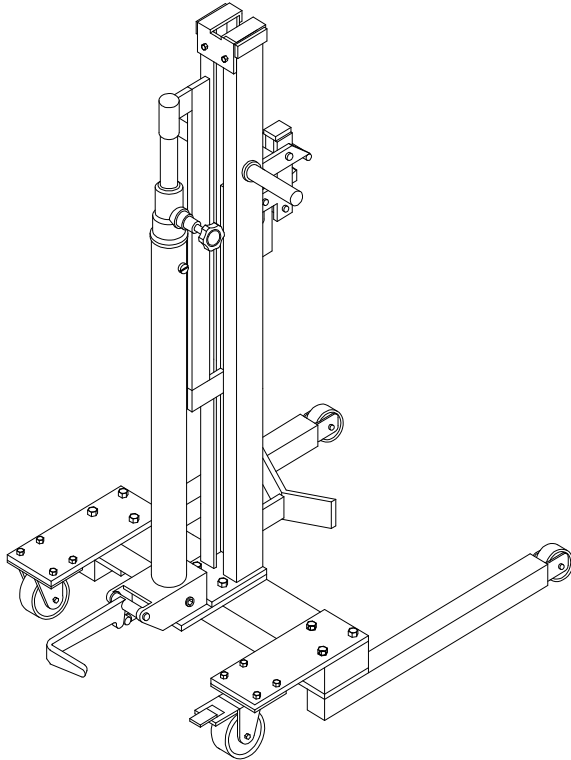


Operation Manual

Hydraulic Drum Truck



Note: The owner/operator must read carefully and understand all the information presented here before operation.

Content

1	Specification.....	2
2	Part Name.....	4
3	Installation and Operation.....	4
4	Warning.....	5
5	Operation Instruction.....	5
	5.1 Lift drum.....	5
	5.2 Transport drum.....	6
	5.3 Put down drum.....	6
6	Hydraulic Circuit Diagram.....	7
7	Exploded View & Part List.....	8

THANK YOU FOR BUYING THE DT300/DT300L HYDRAULIC DRUM TRUCK. PLEASE READ THIS MANUAL CAREFULLY BEFORE USING THE TRUCK IN ORDER TO GET THE WAY OF OPERATING SAFELY AND MAINTAINING.

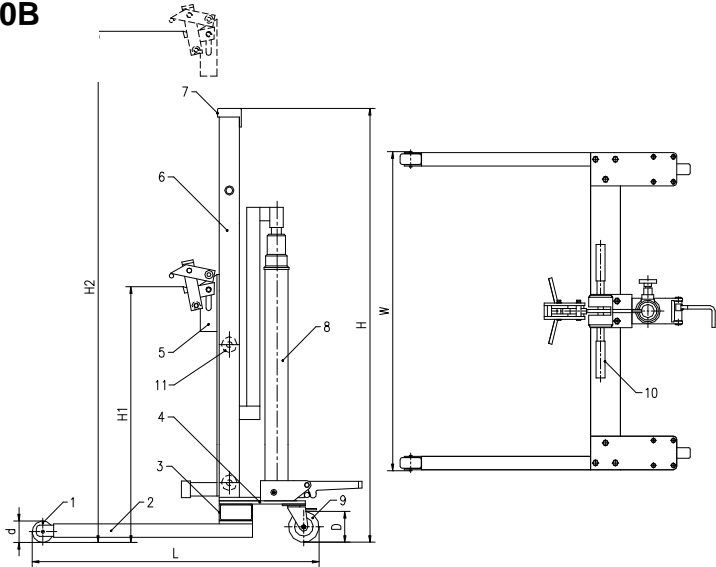
NOTE: All of the information reported herein is based on data available at the moment of printing. The factory reserves the right to modify its own products at any moment without notice and incurring in any sanction. So it is suggested to always verify possible updates.

This hydraulic drum truck can be used to load or unload, transport, stack the drum by clamping it. It is more suitable lifting the drum for its special design of low fork and high hoisting and is widely used in factories, warehouses and so on.

1. Specification

Model	WA30B	
Suitable for Drum Diameter	(mm)	572
Capacity	(Kg)	300
Front Wheel Diameter	d (mm)	64
Rear Wheel Diameter	D (mm)	80
Minimum Clamp Height	H1(mm)	835
Maximum Clamp Height	H2(mm)	1640
Total Height	H (mm)	1525
Length	L (mm)	866
Width	W (mm)	956
Net Weight	(Kg)	68

WA30B

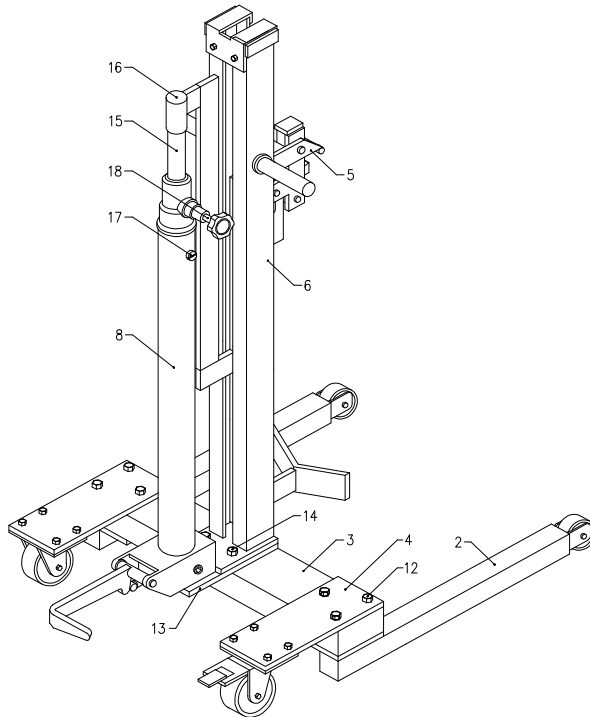


2. Part Name

- | | |
|---------------------------------|------------------------------------|
| (1) Front Wheel | (7) Mast Bonnet |
| (2) Front Wheel Fork Assembly | (8) Cylinder Assembly |
| (3) Supporting Tube | (9) Rear Wheel (Versatile Wheel) |
| (4) Rear Wheel Connecting Board | (10) Operation Handle |
| (5) Supporting Clamp Structure | (11) Pulley |
| (6) Mast Assembly | |

3. Installation

All the parts of the hydraulic drum truck have been cased up when finished. You can install it quickly and expediently as if following the steps below.



- 3.1 Make sure all of the parts are intact contained 2 (Front Wheel Fork Assembly), 12 (Connecting Bolt), 4 (Rear Wheel Connecting Board), 3 (Supporting Tube), 13 (Pad), 14 (Connecting bolt), 8 (Cylinder Assembly), 6 (Mast Assembly), 5(Supporting Clamp Structure), 17 (ventilated screw plunger).
- 3.2 Join 2 (Front Wheel Fork Assembly), 4 (Rear Wheel Connecting Board), 3 (Supporting Tube) together firmly with 12 (Connecting Bolt) as showed in picture.

- 3.3 Join 13 (Pad), 5.6 (Mast & Supporting Clamp Assembly) and 3(Supporting Tube) together firmly with 14 (Connecting bolt).
- 3.4 Emplace 8 (Cylinder Assembly) on 13 (Pad), and cover the top of 15 (Plunge Rod) with 16 (Bushing).
- 3.5 Replace the screw plunge on the top of 8 (Cylinder Assembly) with 17 (ventilated screw plunge).
- 3.6 Make sure supporting clamp structure lifts smoothly without load.
- 3.7 Make sure supporting clamp structure lifts smoothly, wheels move agilely, and brakes are available under the rated load.

4. Warning

- 4.1 Never overload this truck beyond its rated capacity.
- 4.2 Place the drum in a low position when does not lift.
- 4.3 Raise the drum just away from the ground when transport it, do not need to lift it higher.

5. Operation Instruction

5.1 Lift Drum

Move the truck until its supporting clamp structure(5) touch the drum, tighten descending valve lever(18), kick the brake of rear wheel(9). Kick the pedal lever so that the upper biter of supporting clamp structure(5) will screw down to clamp the drum, then continue to kick the pedal lever to lift the drum.

5.2 Transport drum

Loosen brake when the drum has been lifted, control operation handle(10) on the mast assembly(6) to transport the drum.(Just lift the drum a little when transporting it.)

5.3 Put down drum

Loosen descending valve lever(18) to descend the drum to the floor when reaching the destination, then the upper biter of supporting clamp structure(5) will loosen the drum. Tighten descending valve lever(18) at last.

NOTE: It is forbidden to loosen descending valve lever (18) suddenly in case of danger.

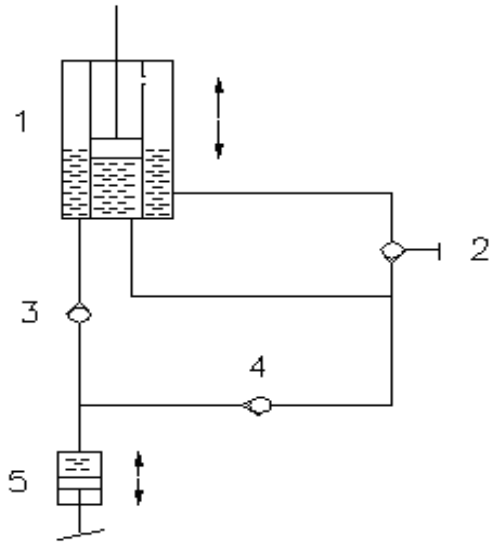
5.4 Please change the hydraulic oil if its work time adds up to 20 hours when you use it for the first time. After that, you should change the oil when its work time adds up to 300 hours. Change the oil every 18 months if the aggregate work time is deficient.

Use different hydraulic oil according to temperature scale below.

Temperature	Hydraulic Oil
-5°C—+45°C	L-HM68 Hydraulic Oil (equivalent to ISO VG68)
-15°C—-5°C	L-HM46 Hydraulic Oil (equivalent to ISO VG46)

Put mast plunge rod at the bottom position when changing the oil. Keep adding the oil until the level reaches the oil hole.

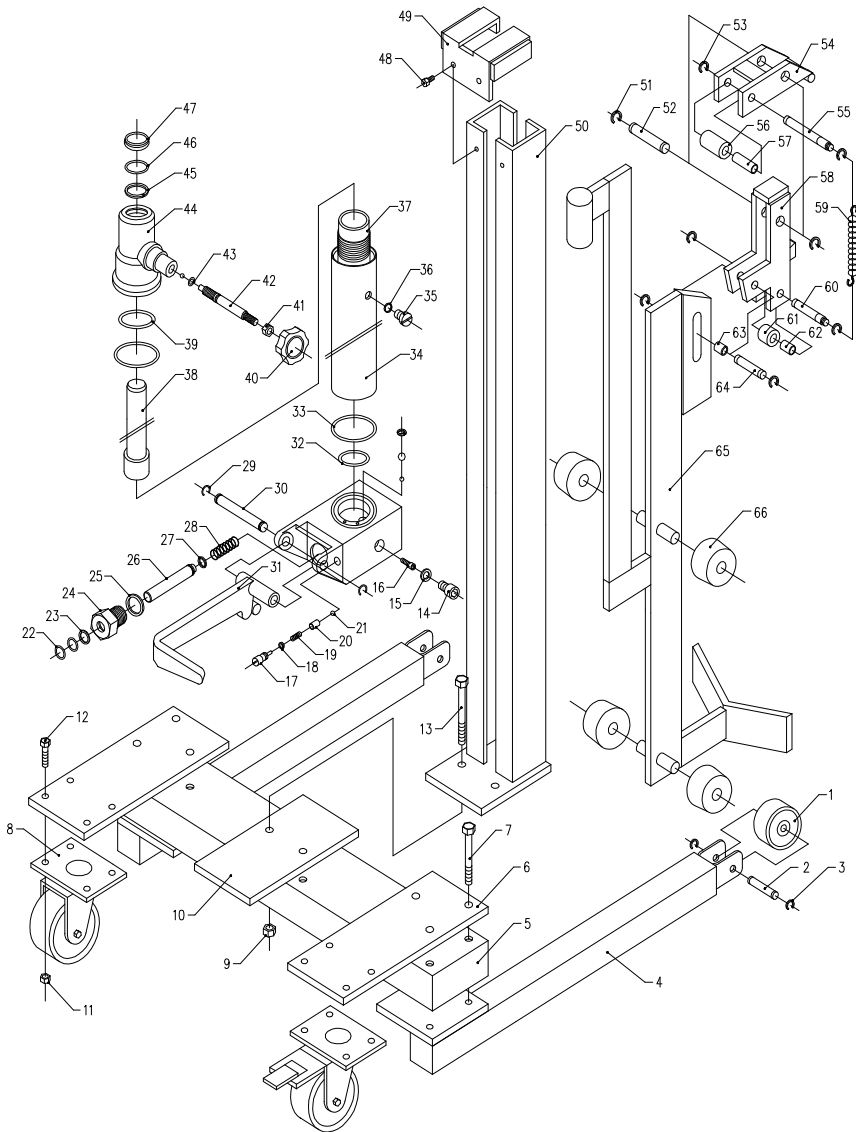
6. Hydraulic Circuit Diagram



No.	Description
1	Hydraulic Cylinder
2	Swivel Discharge Valve
3	Relief valve
4	Work valve
5	Work Cylinder

7. Exploded View & Part List

7.1 Exploded View



7.2 Part List

No	Description	Qty	No	Description	Qty
1	Front WheelΦ64	2	34	Outer Canister	1
2	Front Wheel Pin Axle	2	35	Screw Plunge	1
3	Axle Fender Ring	4	36	O-ring Φ10X1.8	1
4	Front Wheel Fork Assembly	2	37	Inner Canister	1
5	Supporting Tube	1	38	Plunge Rod	1
6	Rear Wheel Connecting Board	2	39	O-ring Φ47.5X2.65	1
7	Connecting Bolt M10X75	6	40	Handle	1
8	Rear WheelΦ80	2	41	Nut M10	1
9	Retaining Nut M10	2	42	Valve Core	1
10	Pad	1	43	O-ringΦ10X1.8	1
11	Nut M8	8	44	Cylinder Bonnet	1
12	Hex Bolt M8X25	8	45	Fender Ring Φ30	1
13	Hex Bolt M10X85	2	46	O-ringΦ30X3.55	1
14	Hex Socket Screw M10X10	1	47	Dustproof Φ30	1
15	Copper Washer Φ10	1	48	Hex Bolt M6X12	2
16	Hex Socket Screw M3X20	1	49	Mast Bonnet	1
17	Adjusting Screw	1	50	Mast Assembly	1
18	O-ringΦ7X1.8	1	51	Axle Fender Ring Φ15	2
19	Adjusting Spring	1	52	Pin Axle	1
20	Cylindrical Pin	1	53	Axle Fender Ring Φ12	6
21	Steel Ball Φ6.35	3	54	Upper Clamp Assembly	1
22	O-ringΦ16X2.65	2	55	Pin Axle	1
23	Fender Ring	1	56	Pulley	1
24	Pump Sheath	1	57	Bearing	1
25	Assembled Washer Φ27	1	58	Nether Clamp Assembly	1

26	Pump Rod	1	59	Spring	1
27	Fender Ring Φ 16	1	60	Pin Axle	1
28	Pump Spring	1	61	Pulley	1
29	Axle Fender Ring Φ 14	2	62	Bearing	1
30	Pin Axle	1	63	Bushing	1
31	Pedal Assembly	1	64	Pin Axle	1
32	O-ring Φ 40X2.65	1	65	Supporting Structure Assembly	1
33	O-ring Φ 62.5X2.65	2	66	Pulley	4